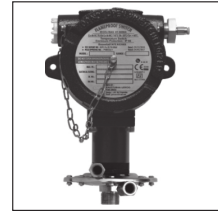


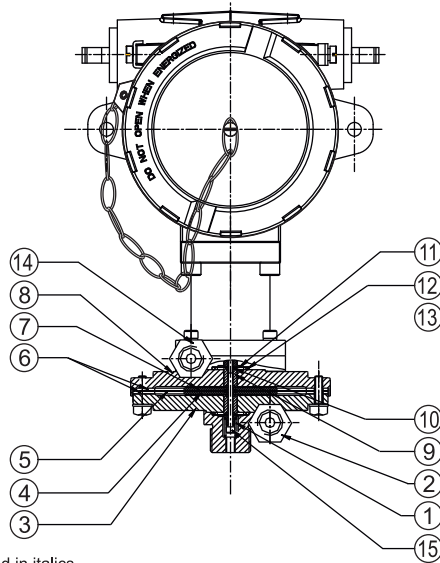
LOW DP HIGH PROOF AIR RELAY SWITCHES FC



FC



PRESSURE CAPSULE DETAILS

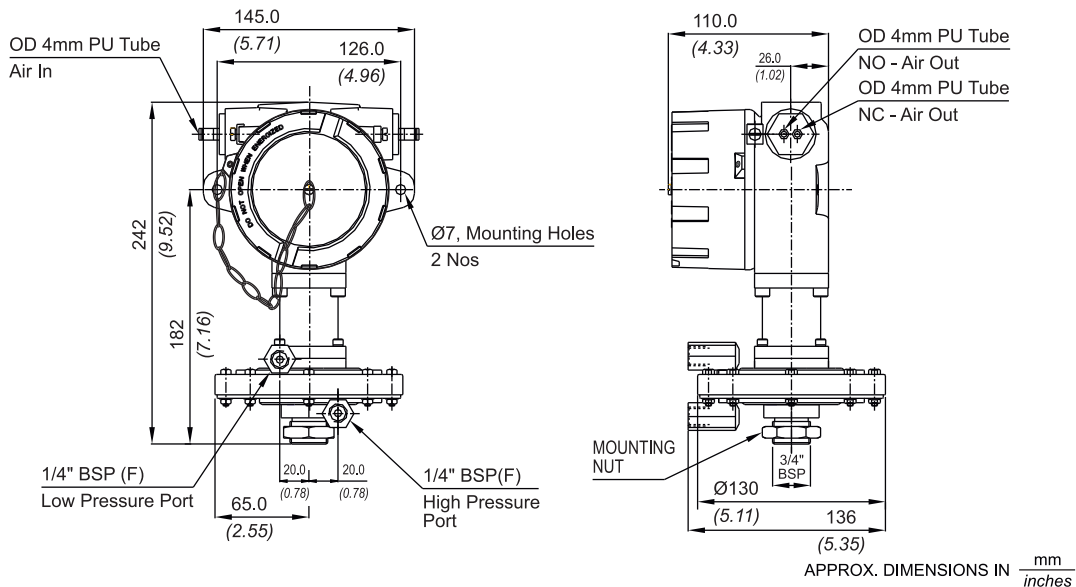


No. Description

1. Support spring (S.S.)
2. High pressure port (S.S.)*
3. Bottom flange (S.S.)*
4. Support plate (S.S.)
5. Diaphragm (Neoprene)
6. Gasket (PTFE)
7. Top plate (S.S.)
8. Top flange (S.S.)*
9. Transfer pin (S.S.)
10. 'O' ring (Nitrile)
11. Sealing diaphragm (Nitrile)
12. PTFE O-Ring
13. SS 316 Ring
14. Low pressure port (S.S.)*
15. Holding screw (C.S.)

Note : wetted parts are mentioned in italics.

INSTALLATION DRAWING



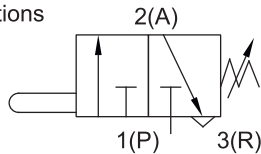
FC LOW DP HIGH PROOF AIR RELAY SWITCHES

RANGE SELECTION TABLE

Range Code	Range mbar ("wc)	Differential* mbar (" wc)	Maximum Working Pressure bar (psi)
		Approximate Maximum for P1 / P2 (Refer Group 6 of How to order table)	
N03	5 to 25 (2.009 to 10.047)	Please consult Sales Office for further information.	20.0 (290.075)
N05	10 to 50 (4.018 to 20.093)		20.0 (290.075)
N10	10 to 100 (4.018 to 40.186)		20.0 (290.075)
N15	10 to 150 (4.018 to 60.280)		20.0 (290.075)
N25	20 to 250 (8.037 to 100.466)		20.0 (290.075)
N35	50 to 350 (20.093 to 140.653)		20.0 (290.075)

Pneumatic valve specifications

NO = Normally Open
or
NC = Normally Closed



CAUTION : Supply pressure of air/inert gas = min. 2 and max. 7 bar

Note:

1. The minimum differential increases with the setpoint. The differential values mentioned in the above table are approximate maximum for FSR. The differential value will vary according to the pressure range selected and microswitch type. For actual values of differential please contact sales office.

If actuation and/or deactuation at same point is critical part of operation, then it can be achieved by using a separate DPDT relay. This relay will need a separate power supply for it's coil.

LOW DP HIGH PROOF AIR RELAY SWITCHES

FC

HOW TO ORDER FLAMEPROOF LOW DP HIGH PROOF AIR RELAY SWITCHES

Group 1	Group 2	Group 3	Group 4	Group 5	Group 6	Group 7	Group 8								
Non standard allocation <input type="checkbox"/> A prefix "N" is used in the model code in case of any non standard options / accessories that are provided with the switches. Will be given by manufacturer, only after agreement of supply details with customer.	Model FC = Air Relay switch Note: Flameproof certification not applicable for Air Relay Switch	Air Inlet/Outlet Ports A1 = Al. head PU tube 4mm OD *A4 = Grey CI PU tube 4mm OD A7 = SS head PU tube 4mm OD	Switch Type D1 = pressure difference switch, fixed differential without scale	Range Code (values in mbar) N03 = (5 - 25) N05 = (10 - 50) N10 = (10 - 100) N15 = (10 - 150) N25 = (20 - 250) N35 = (50 - 350)	Valve Type P1= NC valve P2 = NO valve	Pressure Port Material / Size S1 = SS316 / 1/4" BSP(F) S2 = SS316 / 1/4" NPT(F)	Diaphragm 0 = Neoprene 1 = PTFE								
The prefix is subject to change as per specific requirement. Approx. switch weight in Kgs <table border="1" style="margin-left: 20px; border-collapse: collapse;"> <tr> <td style="padding: 2px;">Enclosure</td> <td style="padding: 2px;">FC</td> </tr> <tr> <td style="padding: 2px;">Aluminium</td> <td style="padding: 2px;">2.210</td> </tr> <tr> <td style="padding: 2px;">Grey CI</td> <td style="padding: 2px;">6.710</td> </tr> <tr> <td style="padding: 2px;">SS</td> <td style="padding: 2px;">6.820</td> </tr> </table>		Enclosure	FC	Aluminium	2.210	Grey CI	6.710	SS	6.820	*Not available in FE models		More options available, please contact sales office			
Enclosure	FC														
Aluminium	2.210														
Grey CI	6.710														
SS	6.820														
eg. Flameproof air relay switch in aluminium housing with PU tube 4mm OD, fixed differential without scale, having 5 mbar to 25 mbar pressure range, with NC valve, SS316 pressure housing with 1/4" BSP port size & neoprene diaphragm shall be specified by															
□	FC	A	D1	N03	P1	S1	0								

Please specify full model number to avoid ambiguity.